



INNOVA<sup>®</sup>  
CARE CONCEPTS

# FLEXI-RAIL GRAB RAILS

[www.innovacareconcepts.com](http://www.innovacareconcepts.com)







## **/ Flexi-Rail**

### **High-quality, confidently stylish, trend-conscious**

Sleek and elegant, the Flexi-Rail bathroom range combines functionality with contemporary style to help reduce the risk of falls at home or in a care environment. Perfect for providing extra support for those with reduced strength, poor balance and limited sight, the Flexi-Rail range offers a number of flexible bathroom aids with two variations of grab rail, giving bathrooms added comfort and stability for users during their everyday washing routine.



## One Design – Two Options

The design of the shower handrails have been upgraded. The customer has the choice between two variations of wall mounts. The L version creates accents by virtue of its two mounting points. The single-point wall mount, with its soft edges, blends into the trigonometric design of the handle contour.









## / Flexi-Rail FlexCare

The newly developed Flexi-Rail FlexCare rail system, with its various accessories, gives bathrooms added comfort and flexibility.

The seamless, soft-edge radii of the wall rail underline the renewal of the emotional design, which charmingly accentuates the aesthetic of any bathroom. The trend-conscious colour palette consisting of the tones carbon black, metallic anthracite, metallic silver, satin beige and classic white conforms to individual bathroom furnishings.









### **A product for all living situations**

These products deliver on both function and design, and developed to cater for all living situations and needs, allowing individuals to have a safe and independent life.



## / What characterises Flexi-Rail

- + Distinctive trigometric handle contour that fits the grasping movement and supports an environment of safety
- + Scratch-resistant powder coating
- + Seamless, soft-edge radii of the wall mounts
- + Minimalist, modern, Nordic-inspired design
- + Single-point wall mounting with high tolerance compensation
- + Base plate vario; quick and easy installation and removal
- + Tested and checked for high load capacity
- + Modular, flexible wall-rail system FlexCare
- + Antibacterial protection: Antibac









### Accessible design made stylish

More than ever, the Flexi-Rail bathroom series offers individual options when it comes to providing comfort and quality, right down to the details of any bathroom design.

It allows for harmonious colour combinations and an exciting arrangement of material mixtures for those cosy moments in the bathroom.

Flexi-Rail is perfectly suited to integrated planning approaches for bathroom furnishings and its pleasing look and feel enhances the feeling of well-being. The design utilises environmentally-friendly materials.

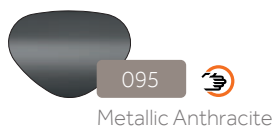
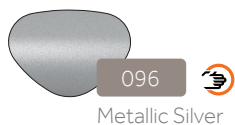








## / Trend colours for Flexi-Rail



### Elegant and durable

The softly shimmering, haptically pleasing surface of Flexi-Rail highlights the elegant design of the series. Attractive trend tones harmonise with a wide range of different interior styles. An environmentally-friendly powder coating ensures long-lasting durability and makes cleaning easy.



Antibac: Antibacterial hygiene protection (p. 29)



## / Flexi-Rail Chrome

### Shining star of the series

The Flexi-Rail Chrome bathroom series, with its combination of powder-coated and high-sheen chromium-plated elements, will give any private bathroom the high quality look and feel you'll find in hospitals, retirement homes or the restrooms of upscale hotels. It satisfies the most discerning of tastes in quality and design when it comes to bathroom furnishing.













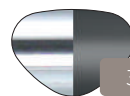
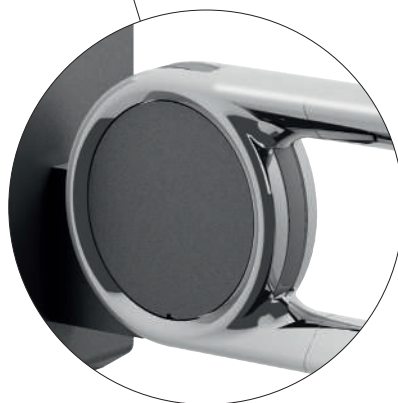






392

Chrome White



395

Chrome Metallic Anthracite



## / Sophisticated mix of materials

### Merged into one

The chrome coating provides a cool silver effect and creates a particularly sophisticated impact in combination with the powder-coated elements.







## / Flexi-Rail FlexCare

### **Flexibility for maximum convenience**

The wall rail serves as a supporting functional component. It allows you to hang, individually position and secure accessories.

The flexible tray is the centrepiece of the series. Installed on an articulated bracket, it can be swivelled out or in to save space when necessary.

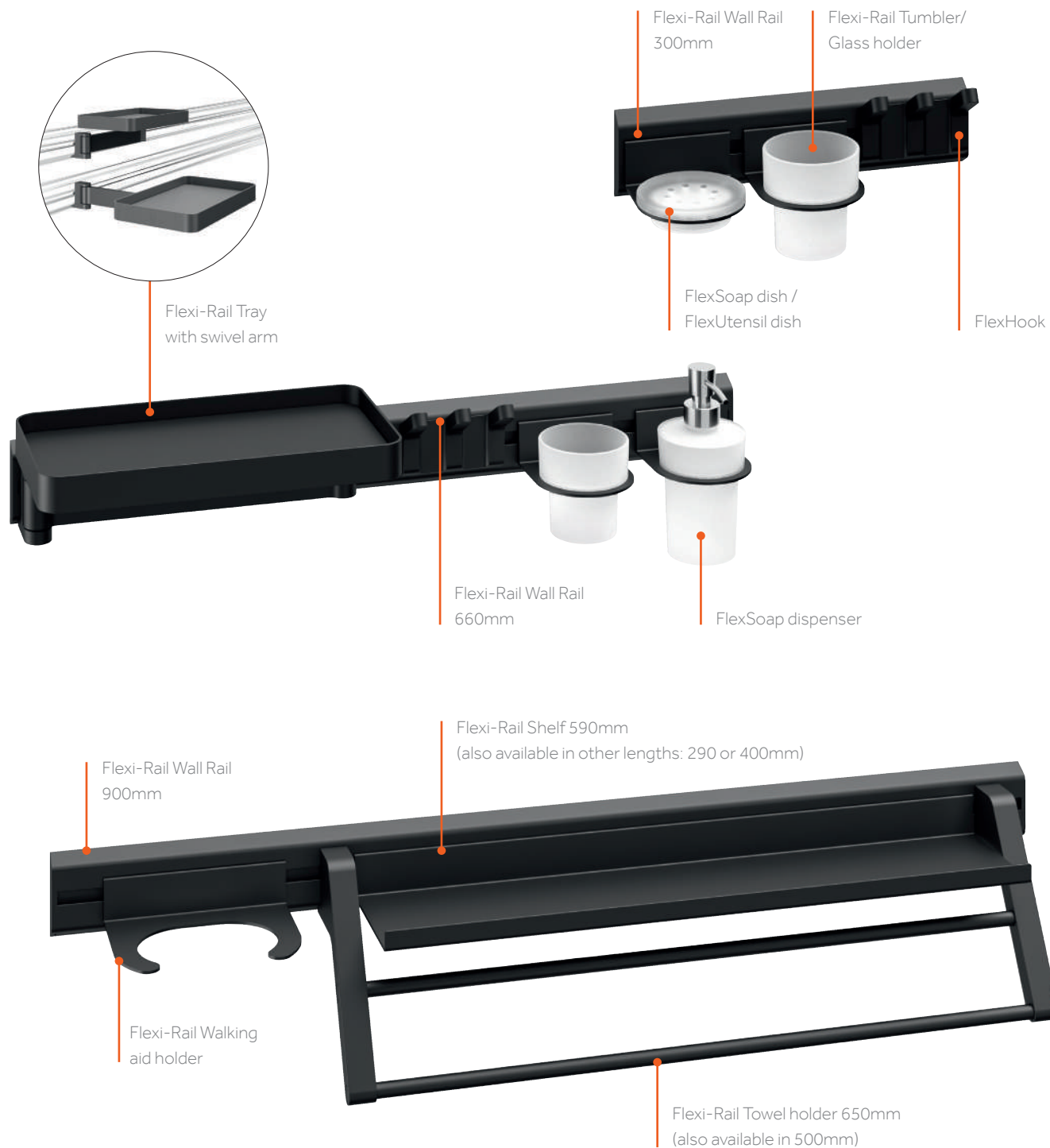




## Application examples

Taking the length into account, the wall-rail system can be combined with a variety of accessories.

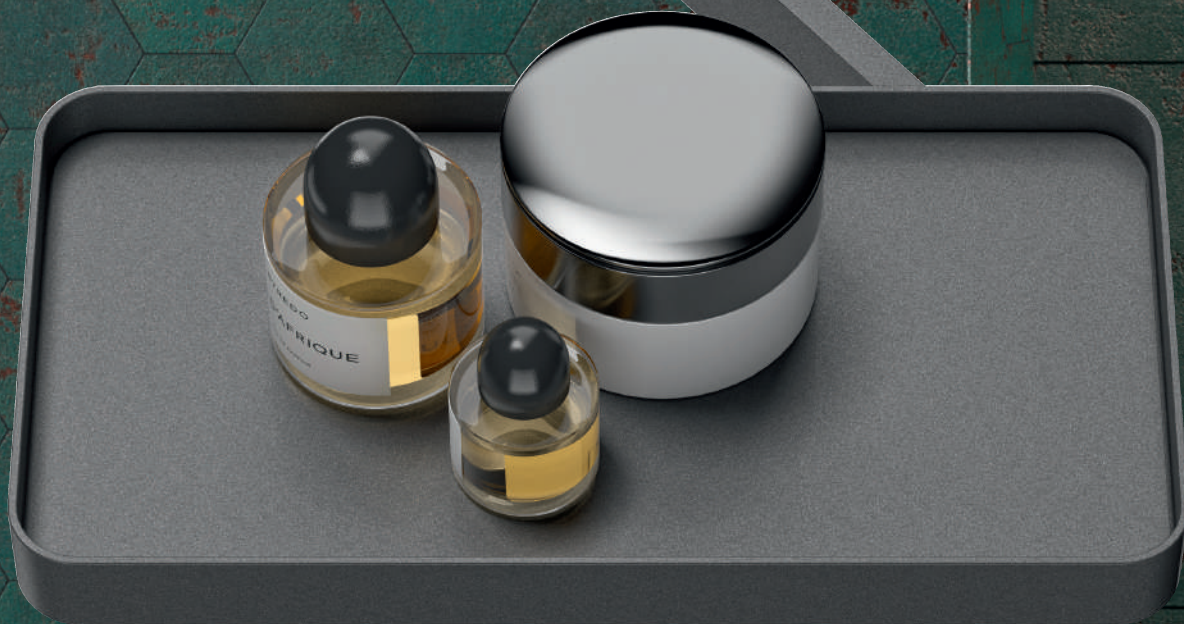






+ Maximum storage 600mm,  
swivel radius 180°

+ Tray 150 x 300mm



+ Can be mounted on the  
wall separately or within  
the FlexCare system

+ Positioned onto the  
swivel arm

+ Load capacity max. 4kg





## / FlexTray

### Wash basin and bathtub

The FlexTray storage system consists of a tray and an underlying swivel arm. It can be freely swivelled out and positioned in a radius of 600 mm. This allows those who use the bathroom to always have everything in grasping distance, which is important for daily personal care. Thanks to its clever construction, it overlaps the swivel arm when you slide it back towards the wall, making it virtually invisible.







## / Gluing instead of drilling



### Design meets intelligent gluing technology

To allow even more flexibility in room design, our developers have integrated gluing technology into the Flexi-Rail product portfolio. This means that the rail, as a basic element for all accessories, can be attached individually and without drilling to any tile - whether at the washbasin, the bathtub, the shower area or even in the kitchen. The water-resistant adhesion makes projects possible without any tools, noise or dirt.

- + Easy handling: Assembly without tools, noise and mess
- + Quick curing time of only 12 hours
- + Even more flexibility, as it can be removed without leaving any residue



Aluminium base bar









# / Antibacterial hygiene protection



## Product benefits

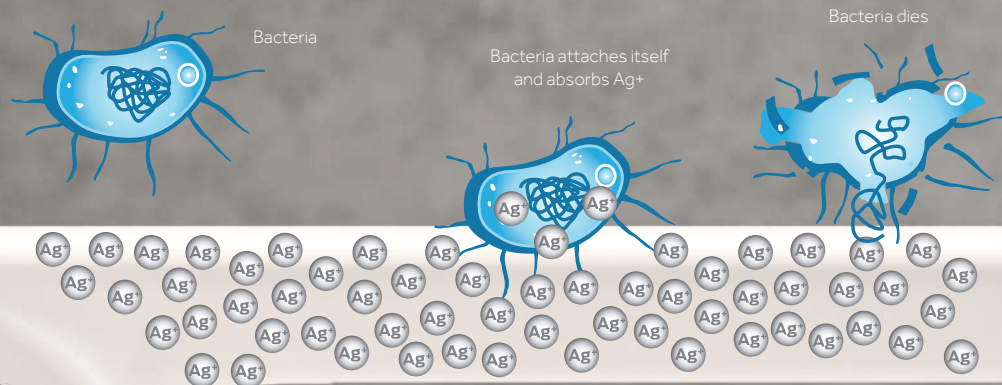
- Outstanding action against bacteria and fungi
- Long-lasting protection afforded by the controlled release of silver ions
- No nanotechnology
- Very high resilience to cleaning, usage and light
- No discolouration or yellowing
- Environmentally friendly
- Exceptionally kind to the skin
- Innovative, premium quality product

## Sustainable contribution protecting the environment

- Resource-friendly application technology
- Longer service life
- More economical use of water, cleaning agents and energy
- Compliant with international regulations
- Certified safety for people and the environment

## Antibac for safety

Using silver ions to enhance the resource-saving application technology of Antibac, the master batch is mixed into the powder coating and evenly applied to the product during the coating process. Protecting the surface against bacteria in this way ensures increased safety by preventing the growth of harmful micro-organisms such as bacteria and mould.

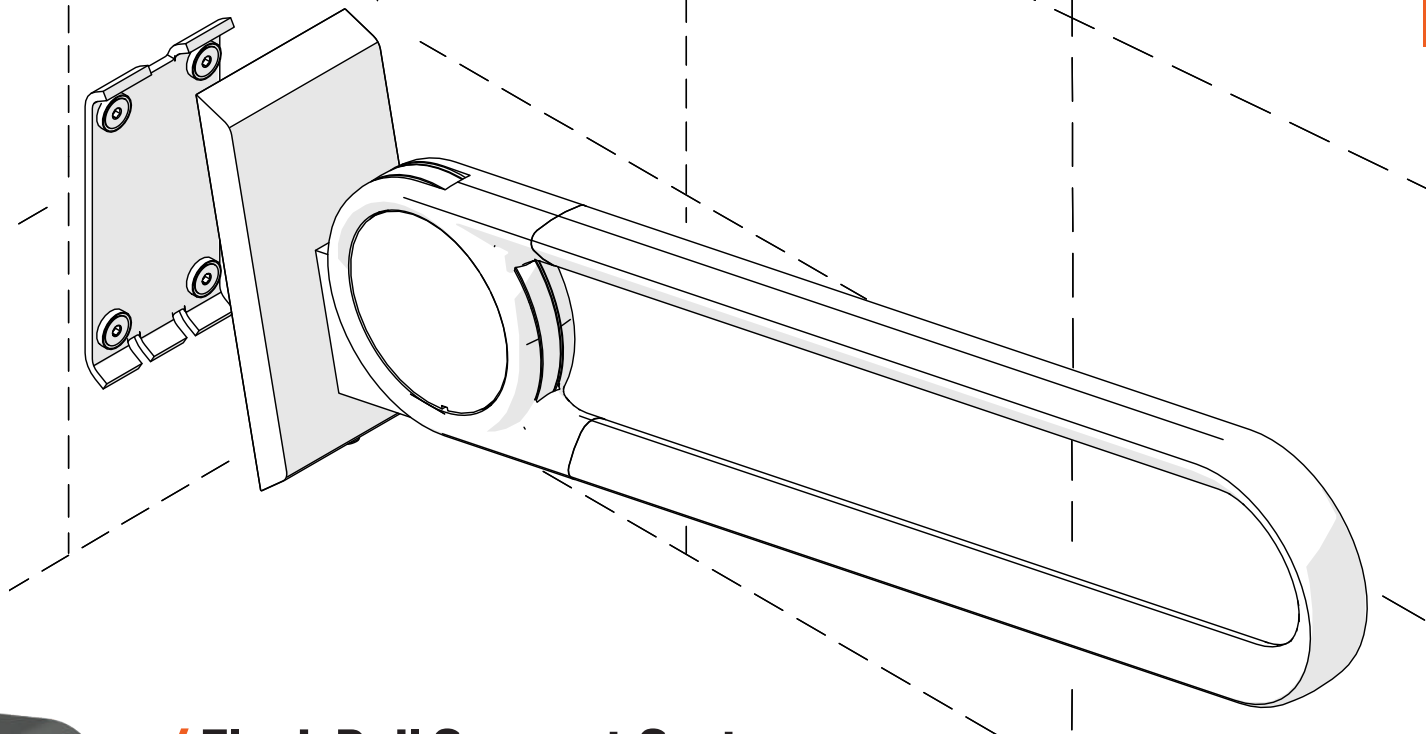






**+** The blanking plate facilitates rapid reconfigurations

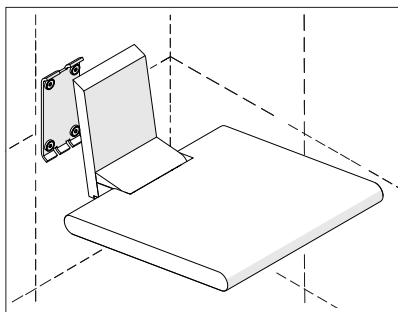
**+** Compatible with the range



## / Flexi-Rail Support System

### High level of flexibility

The fitting ranges have now added yet another basic element of needs-based equipment for accessible bathrooms in the form of the Flexi-Rail Support System. Load-bearing functional parts in the series come complete with the Flexi-Rail Support System base plate. This not only makes for a high degree of flexibility in terms of planning, equipment and use, but also saves on costs.



### Needs based

Bathrooms can be easily adapted to suit new situations in no time.





## / Ergonomics and design



### **Toilet area**

The ergonomically customised, trigonometrical grip contour of the supporting fold-down handles and wall support rails provide secure support and grippage when operating the toilet. The brackets, which run flat along the wall, serve as a supporting element and blend seamlessly into the trigonometric design of the handle contour.

The high-quality and durable powder coating ensures that the fold-down handles and wall support rails maintain their sleek and aesthetic look, even after intensive use.



## / High-quality support



### **Shower- and bathroom-tub area**

The shower rails, will, in addition to the familiar L mount, in future also be offered with reduced design single-point mounting. This makes it easy for anyone to create individual design accents that complement the look of the accessory series or that match the mounts of the shower head holder, grip handles and angled handles.

The trigonometric profile of the handle also gives the shower rails a secure and haptically pleasing feel. The mounts make it very easy to mount and dismount the folding seat onto the shower rails.

The system fulfils all the requirements for secure and uncomplicated fastening technology for handrails and handlebars and can be installed with minimal effort. The cleaning-friendly surface makes it especially easy to keep all parts clean and well-maintained at all times.





### Stylish and personalised

Ascento suits the needs of its users by allowing them to choose the appearance and functionality of the seating solution just the way they want it.

- + Ergonomic seat and backrest
- + Individual models for flexible retrofitting



# / Take a seat

## Modular Seating Solution

With the Flexi-Rail Modular Seat, barrier-free and health care shower areas can be attractively furnished. The shower stool and the folding shower seat enable young and old to have a comfortable and safe shower while seated. Functionality and aesthetics are optimally combined in a convincing way.

- + Comfortable, anti-slip surface
- + Max. Load capacity: Seating area up to 150 kg
- + Can be combined with all Flexi-Rail series





## / Stylish harmony



### Wash basin area

The wash basins made of easy-to-clean, break-proof and haptically pleasing mineral glass consistently carry on the unique character of the design concept.

The well-balanced harmony between contour and grip support provides security and comfort when using the accessible, barrier-free basin and offers comfortable support for your arms. The grip handles can also be used as towel holders. The smooth radii of the inner basin adapt to the trigonometric contour, while at the same time providing generous shelf space for storing cosmetic and care products.







T: 0345 034 1450

E: [enquiries@innova.uk.com](mailto:enquiries@innova.uk.com)

[www.innovacareconcepts.com](http://www.innovacareconcepts.com)



All images are for illustration purposes only.

**Innova®** is a trading name of **Innova Care Concepts Ltd**, a company registered in England & Wales at Rofta House, Rudgate, Thorp Arch, Wetherby, Leeds LS23 7QA, UK. Registered Company Number: 11951702.