

Modular Changing Places

Overview



Product Description

Modular Changing Places are pre-fabricated units that can be situated wherever needed to provide accessible toilet facilities for disabled users.

Built fully off-site, the facility can be installed in half a day onto a prepared base with services already in place, providing a quick and effective way of including a compliant Changing Place. We also provide a wide range of external finishes; internal wall finishes and flooring colours to match your existing building and environment.

Each modular facility provides 12sqm of internal floor space and a minimum internal ceiling height of 2.4m, designed to meet the required space perfectly. The building is designed in line with all current building regulations and design codes of practice set out in BS8300.

Key Benefits

- ✓ **Minimal Disruption** - Providing service feeds are in place, can be delivered and positioned on-site as a complete unit in half a day, helping to minimise any downtime or interruption.
- ✓ **Purple Pound** - Offers the opportunity to benefit from the 'Purple Pound' by providing accessible facilities for disabled people and their families.
- ✓ **Cost-Effective** – Whether it is in an open/ remote location, a venue with limited internal space or even a Listed building that can't be modified, a standalone unit delivers a simple, cost-effective solution to have a compliant Changing Place.
- ✓ **Future Proofing** – Without any need to dismantle, the modular Changing Place can be craned on to the back of a lorry and relocated into a location of your choice.



Prices starting from £50,000 for complete modular Changing Places package.

To find out more about how you can apply for funding, click [here!](#)

For more information on Changing Places, click on the arrow

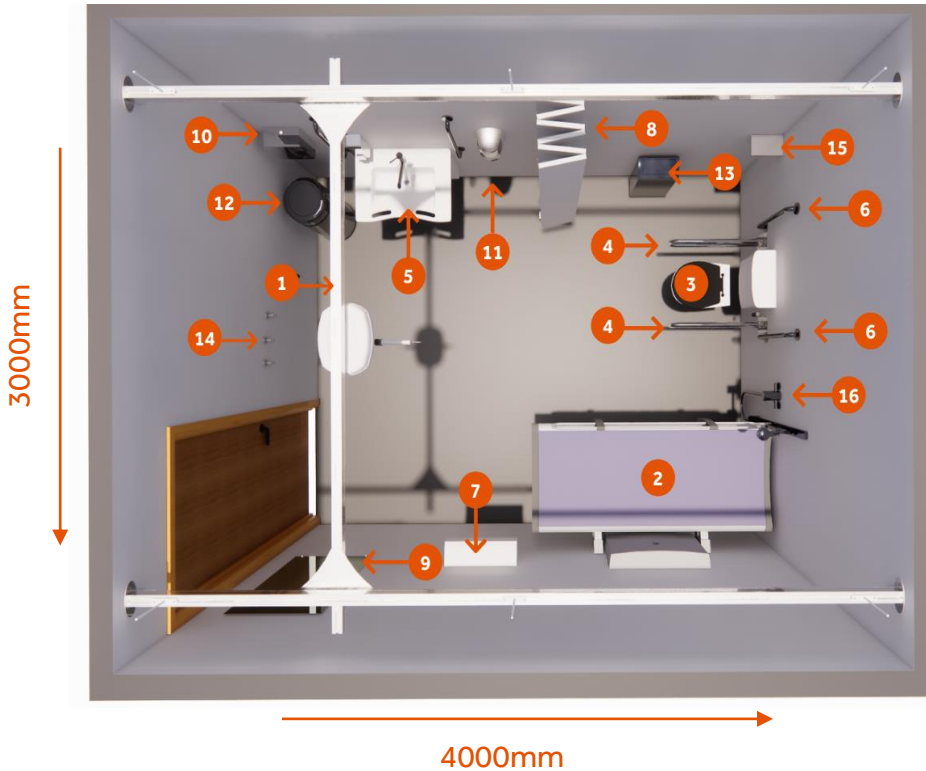


Click [Here](#) To Book An Appointment

Modular Changing Places

Overview

Equipment Package



To be registered as a Changing Place, the facility must include:

1. Overhead hoist system
2. Height-adjustable changing bench
3. Peninsular toilet
4. Dropdown rails
5. Height-adjustable washbasin with soap dispenser
6. Vertical grab rails
7. Wide paper roll dispenser
8. Retractable privacy screen
9. Full-length mirror
10. Paper towel dispenser
11. Hand dryer
12. General waste bin
13. Sanitary bin
14. Coat hooks
15. Colostomy bag shelf
16. Shower (Optional)

Elevations



Product Dimensions:

External Dimensions:
• 4591mm x 3591mm

Internal Dimensions:
• 4000mm x 3000mm

Height:

External Height:
• 2670mm

Internal Height:
• 2400mm